

# Vacant Commercial Land on Davie Boulevard

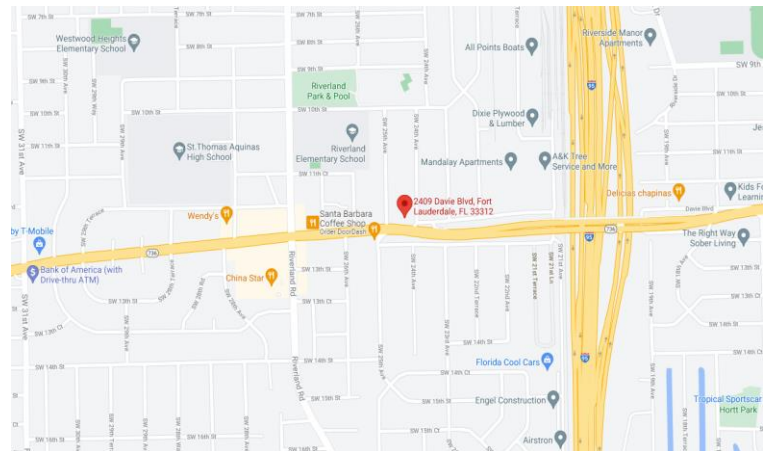
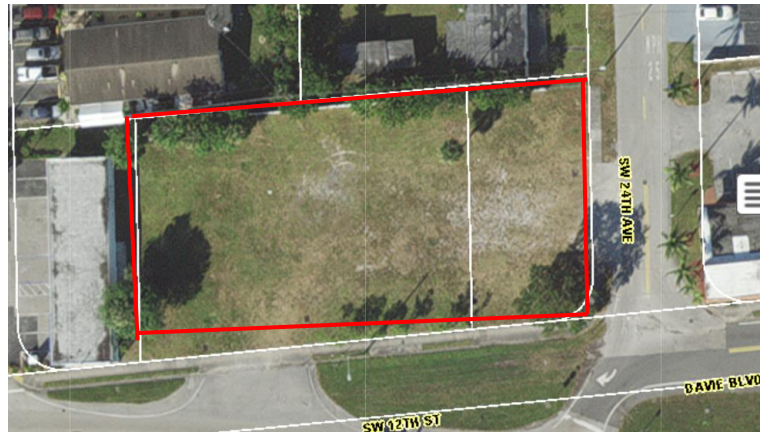
## GROUND LEASE ONLY \$110,000 NNN

**2409 Davie Boulevard  
Ft. Lauderdale, Broward County, Florida**

### Property Highlights

- Land Size – .51 acres (22,479 sq. ft.)  
(2 parcels)
- Zoning Classification – Vacant Commercial
- Located just west of Interstate 95 on Davie Boulevard at SW 24<sup>th</sup> Avenue
- Good Access & Visibility
- Heavy Residential Area
- Good Retail Mix
- Traffic Count – 38,500 Davie Blvd.
- 2022 Property Taxes \$6,627

**No Convenience Store or Gas Allowed  
(other restrictions may apply)**



**Contact:**

**Gina LeMaster Brown**  
352.415.4499  
gina@intrepidcre.com

365 Citrus Tower Blvd., Suite 102, Clermont, FL 34711 - [www.intrepidcre.com](http://www.intrepidcre.com)

The information contained herein has been given to us by the owner of the property or other sources we deem reliable. We have no reason to doubt its accuracy, but do not guarantee it. All information should be verified before entering into an agreement.

# Overhead Aerial

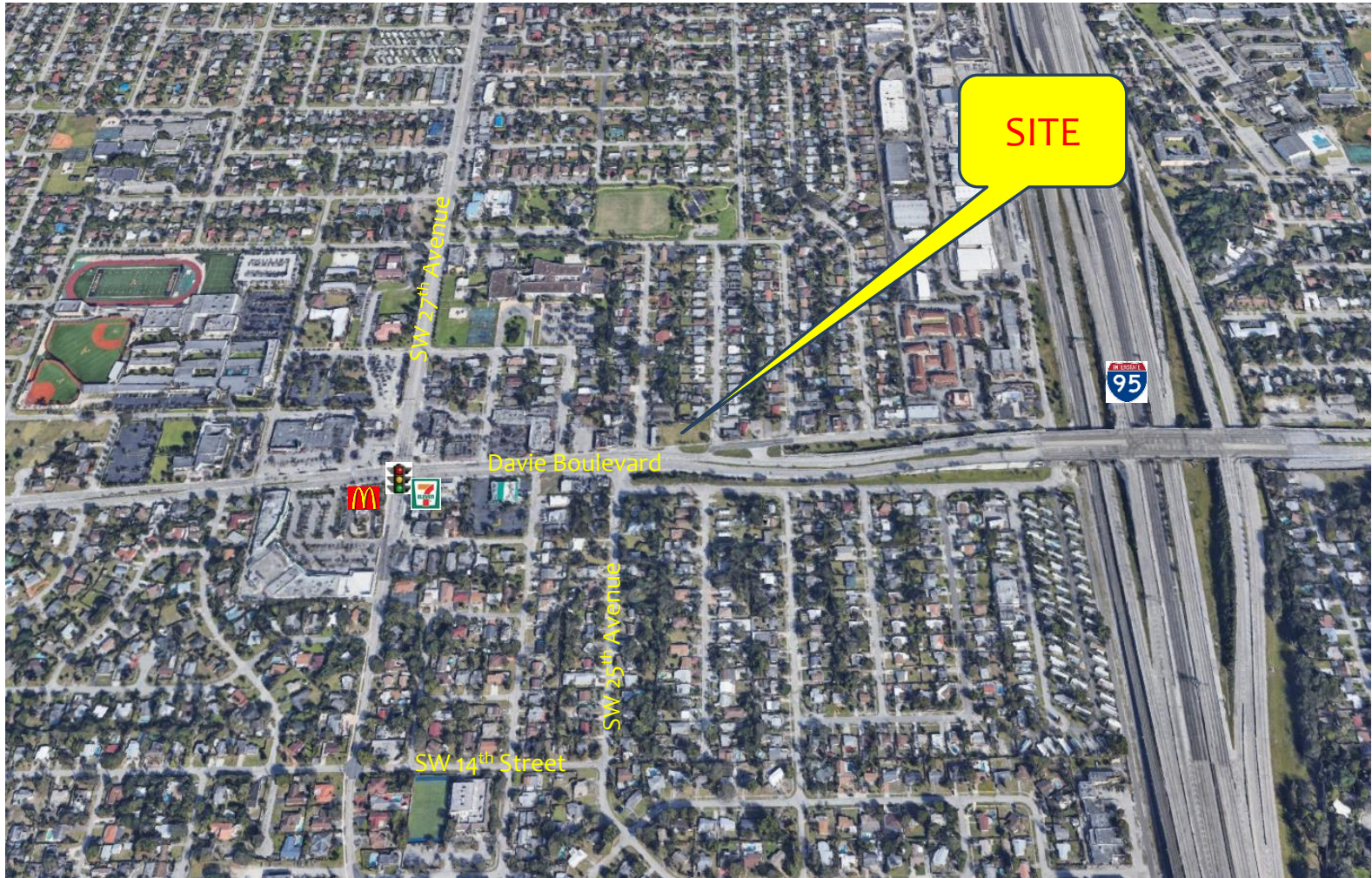


Contact  
**Gina LeMaster Brown**  
352.415.4499  
gina@intrepidcre.com

365 Citrus Tower Blvd., Suite 102, Clermont, FL 34711 - [www.intrepidcre.com](http://www.intrepidcre.com)

The information contained herein has been given to us by the owner of the property or other sources we deem reliable. We have no reason to doubt its accuracy, but do not guarantee it. All information should be verified before entering into an agreement.

# High Aerial



Contact  
**Gina LeMaster Brown**  
352.415.4499  
gina@intrepidcre.com

365 Citrus Tower Blvd., Suite 102, Clermont, FL 34711 - [www.intrepidcre.com](http://www.intrepidcre.com)

The information contained herein has been given to us by the owner of the property or other sources we deem reliable. We have no reason to doubt its accuracy, but do not guarantee it. All information should be verified before entering into an agreement.