

Vacant Commercial Land on Davie Boulevard

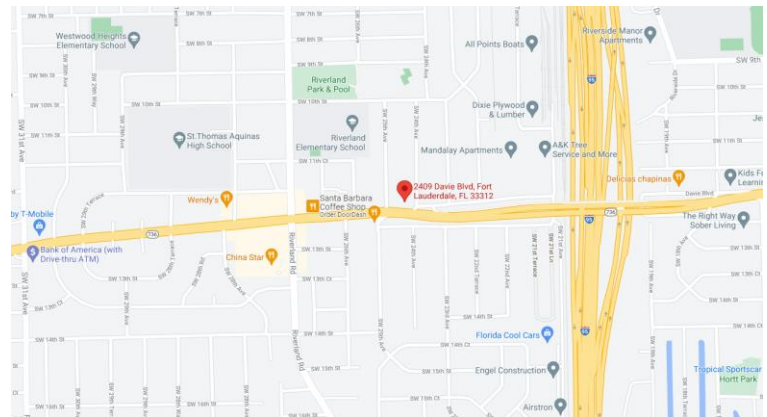
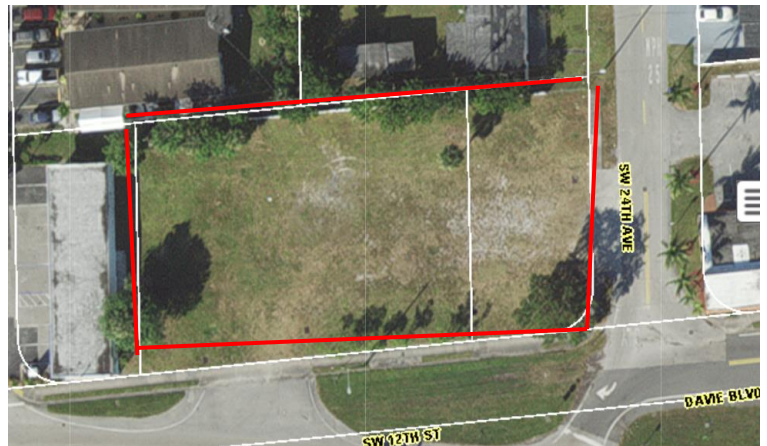
GROUND LEASE ONLY \$110,000 NNN

Property #43485 - 2409 & 2415 Davie Boulevard
Ft. Lauderdale, Broward County, Florida

Property Highlights

- Land Size – .51 acres (22,479 sq. ft.)
(2 parcels)
- Zoning Classification – Vacant Commercial
- Located just west of Interstate 95 on Davie Boulevard at SW 24th Avenue
- Good Access & Visibility
- Heavy Residential Area
- Good Retail Mix
- Traffic Count – 38,500 Davie Blvd.
- Parcel ID #5042-0807-0430 & 0431
- 2024 Combined Property Taxes \$7,039.60

**No Convenience Store or Gas Allowed
(other restrictions may apply)**



Contact:
Gina LeMaster Brown
352.415.4499
gina@intrepidcre.com

365 Citrus Tower Blvd., Suite 102, Clermont, FL 34711 - www.intrepidcre.com

The information contained herein has been given to us by the owner of the property or other sources we deem reliable. We have no reason to doubt its accuracy, but do not guarantee it. All information should be verified before entering into an agreement.

Overhead Aerial

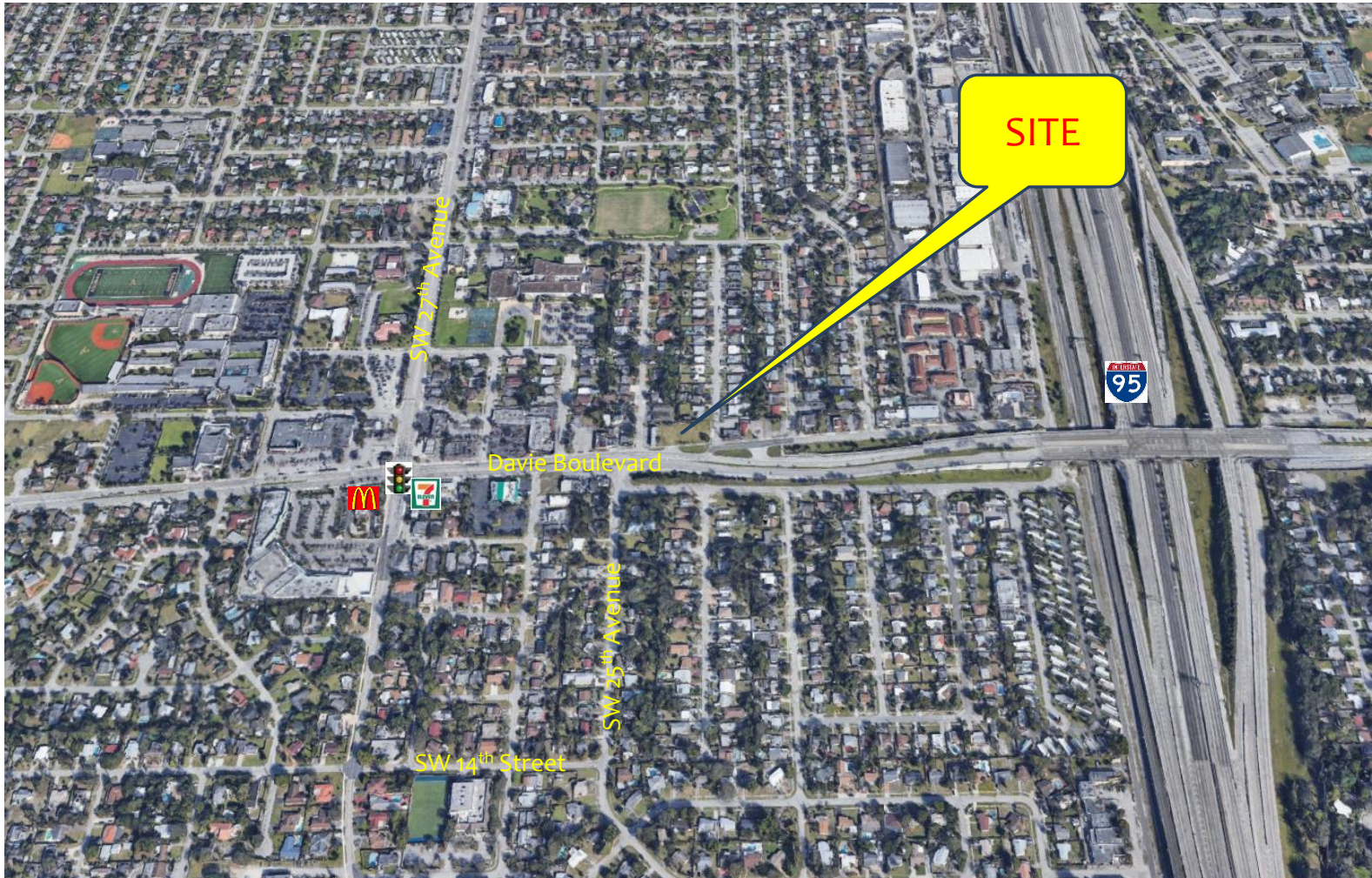


Contact
Gina LeMaster Brown
352.415.4499
gina@intrepidcre.com

365 Citrus Tower Blvd., Suite 102, Clermont, FL 34711 - www.intrepidcre.com

The information contained herein has been given to us by the owner of the property or other sources we deem reliable. We have no reason to doubt its accuracy, but do not guarantee it. All information should be verified before entering into an agreement.

High Aerial



Contact
Gina LeMaster Brown
352.415.4499
gina@intrepidcre.com

365 Citrus Tower Blvd., Suite 102, Clermont, FL 34711 - www.intrepidcre.com

The information contained herein has been given to us by the owner of the property or other sources we deem reliable. We have no reason to doubt its accuracy, but do not guarantee it. All information should be verified before entering into an agreement.