

Freestanding Closed Convenience Store w/Car Wash

FOR SALE - \$800,000

37130 Eiland Boulevard Zephyrhills, Pasco County, Florida

Property Highlights

- Building Size 3,714 square feet
- Year Built 2002
- Land Size – 1.59 acres (69,260 sq. ft.)
- Located at the corner of Eiland Blvd. & Geiger Road
- Zoning Classification – PUD
- Freestanding sign
- Good Access & Visibility
- 2019 Property Taxes \$17,512

**Will be Deed Restricted for Use as a
Convenience Store with or without
Motor Fuels
(other restrictions may apply)**



Contact:
Gina LeMaster Brown
352.415.4499
gina@intrepidcre.com

365 Citrus Tower Blvd., Suite 102, Clermont, FL 34711 - www.intrepidcre.com

The information contained herein has been given to us by the owner of the property or other sources we deem reliable. We have no reason to doubt its accuracy, but do not guarantee it. All information should be verified before entering into an agreement.

Overhead Aerial

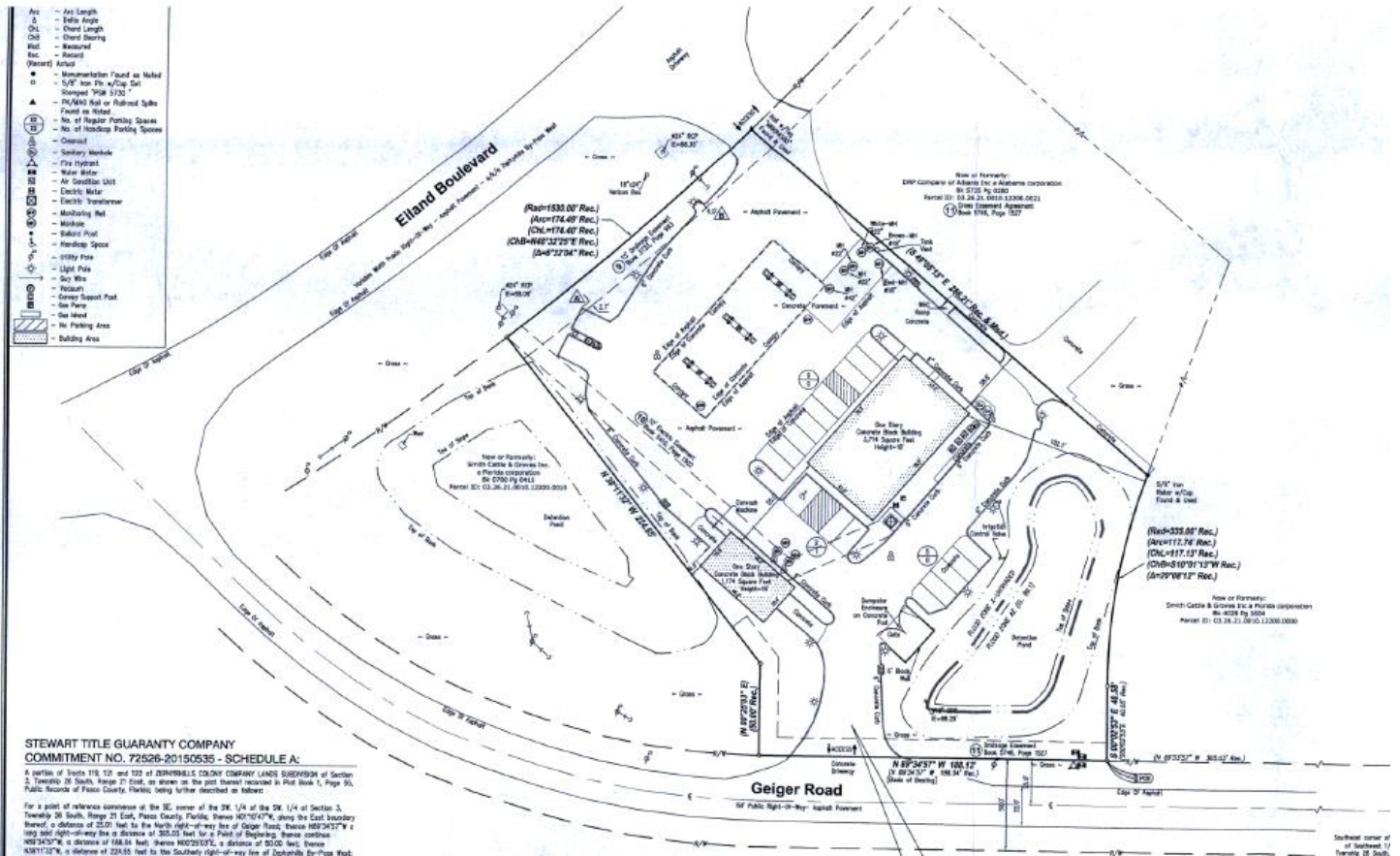


Contact
Gina LeMaster Brown
352.415.4499
gina@intrepidcre.com

365 Citrus Tower Blvd., Suite 102, Clermont, FL 34711 - www.intrepidcre.com

The information contained herein has been given to us by the owner of the property or other sources we deem reliable. We have no reason to doubt its accuracy, but do not guarantee it. All information should be verified before entering into an agreement.

Site Plan

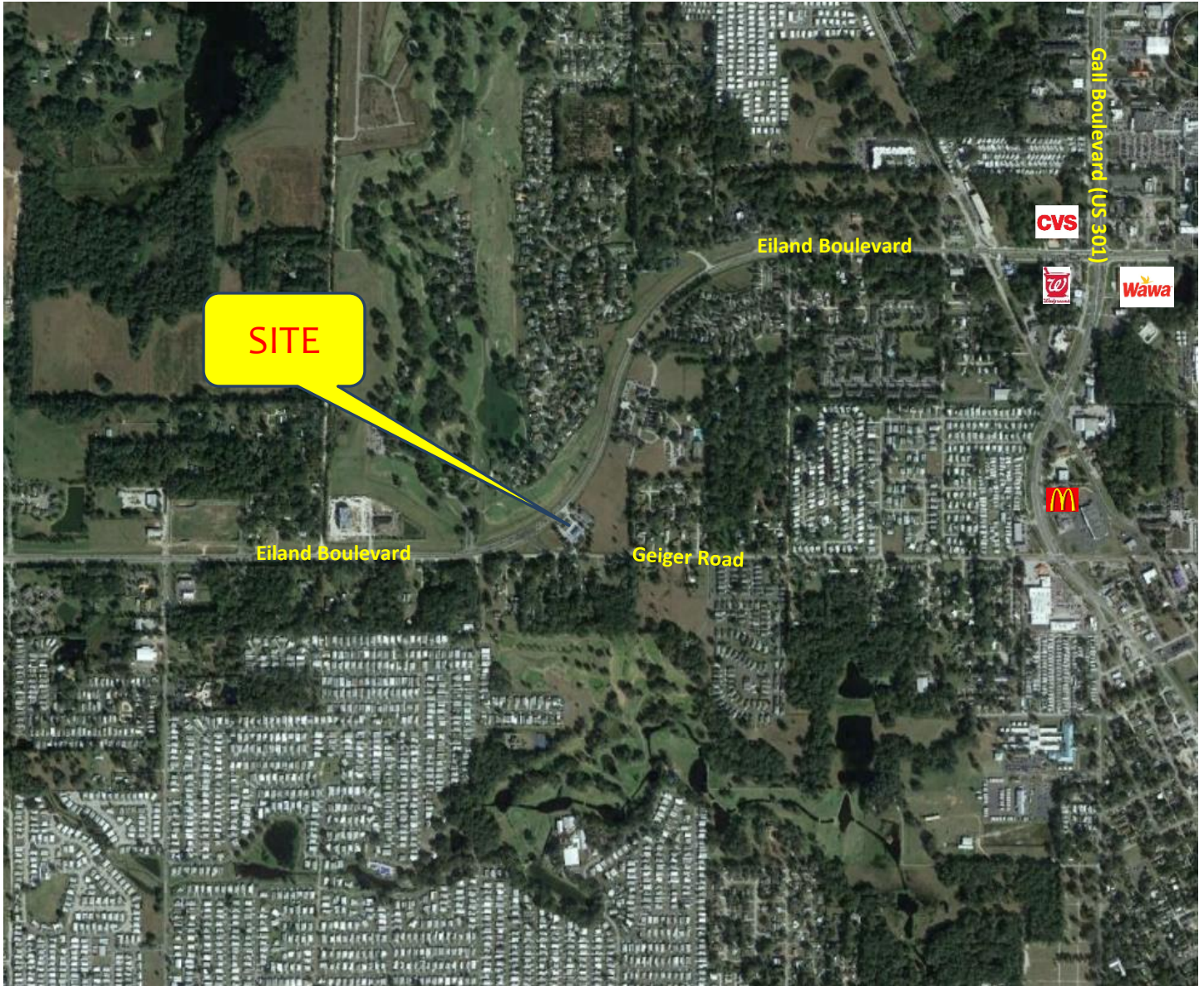


Contact
Gina LeMaster Brown
 352.415.4499
 gina@intrepidcre.com

365 Citrus Tower Blvd., Suite 102, Clermont, FL 34711 - www.intrepidcre.com

The information contained herein has been given to us by the owner of the property or other sources we deem reliable. We have no reason to doubt its accuracy, but do not guarantee it. All information should be verified before entering into an agreement.

High Aerial



Contact
Gina LeMaster Brown
352.415.4499
gina@intrepidcre.com

365 Citrus Tower Blvd., Suite 102, Clermont, FL 34711 - www.intrepidcre.com

The information contained herein has been given to us by the owner of the property or other sources we deem reliable. We have no reason to doubt its accuracy, but do not guarantee it. All information should be verified before entering into an agreement.

Area Map



Contact

Gina LeMaster Brown
352.415.4499
gina@intrepidcre.com

365 Citrus Tower Blvd., Suite 102, Clermont, FL 34711 - www.intrepidcre.com

The information contained herein has been given to us by the owner of the property or other sources we deem reliable. We have no reason to doubt its accuracy, but do not guarantee it. All information should be verified before entering into an agreement.