

Freestanding Closed Retail Store

FOR SALE - \$1,800,000

**Property # 27273 - 2460 Periwinkle Way
Sanibel, Lee County, Florida 33957**

Property Highlights

- Great corner location – Bring your business to Sanibel!!!
- Retail Building Size 2,706 sq. ft.
- Year Built 1987
- Folio #10022384
- Interior walls have been removed and taken back to the studs
- Land Size – .66 acres (28,659 sq. ft.)
- Zoned – Commercial
- Good Access & Visibility
- 2023 Property Taxes - \$20,142.73

PROPERTY BEING SOLD “AS-IS”

Will be Deed Restricted from being used as a Convenience Store with or without Motor Fuels (other restrictions may apply)



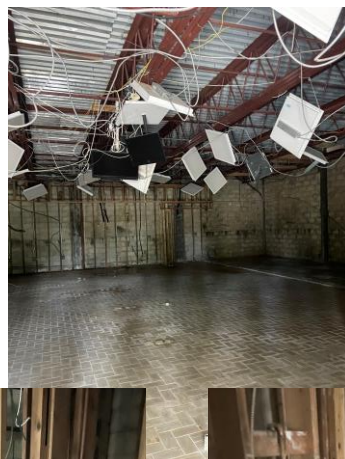
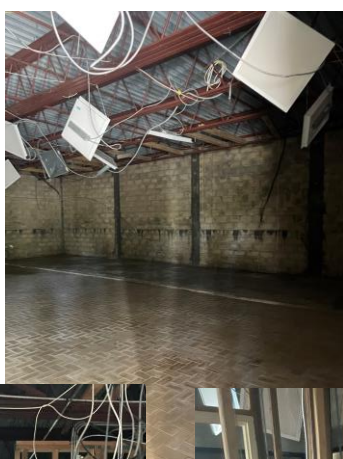
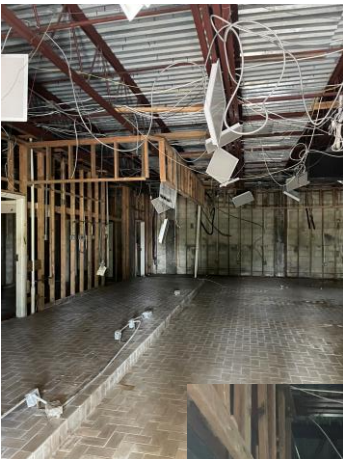
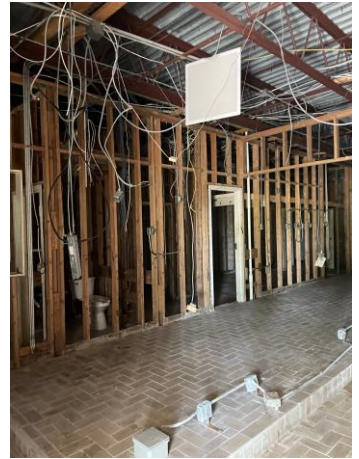
Contact:

Gina LeMaster Brown
352.415.4499
gina@intrepidcre.com

365 Citrus Tower Blvd., Suite 102, Clermont, FL 34711 - www.intrepidcre.com

The information contained herein has been given to us by the owner of the property or other sources we deem reliable. We have no reason to doubt its accuracy, but do not guarantee it. All information should be verified before entering into an agreement.

Exterior & Interior Photos



Contact
Gina LeMaster Brown
352.415.4499
gina@intrepidcre.com

365 Citrus Tower Blvd., Suite 102, Clermont, FL 34711 - www.intrepidcre.com

The information contained herein has been given to us by the owner of the property or other sources we deem reliable. We have no reason to doubt its accuracy, but do not guarantee it. All information should be verified before entering into an agreement.

Overhead Aerial View

THIS AERIAL IMAGE WAS TAKEN PRIOR TO HURRICANE IAN

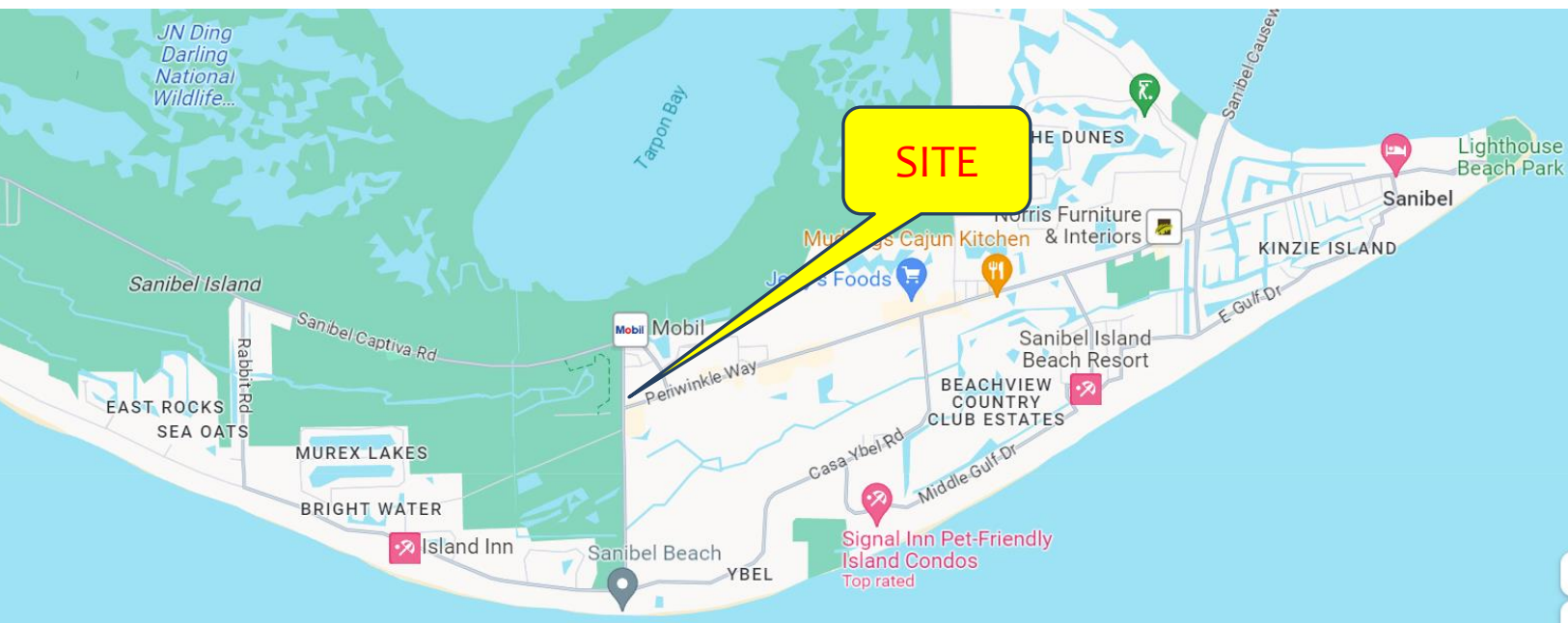
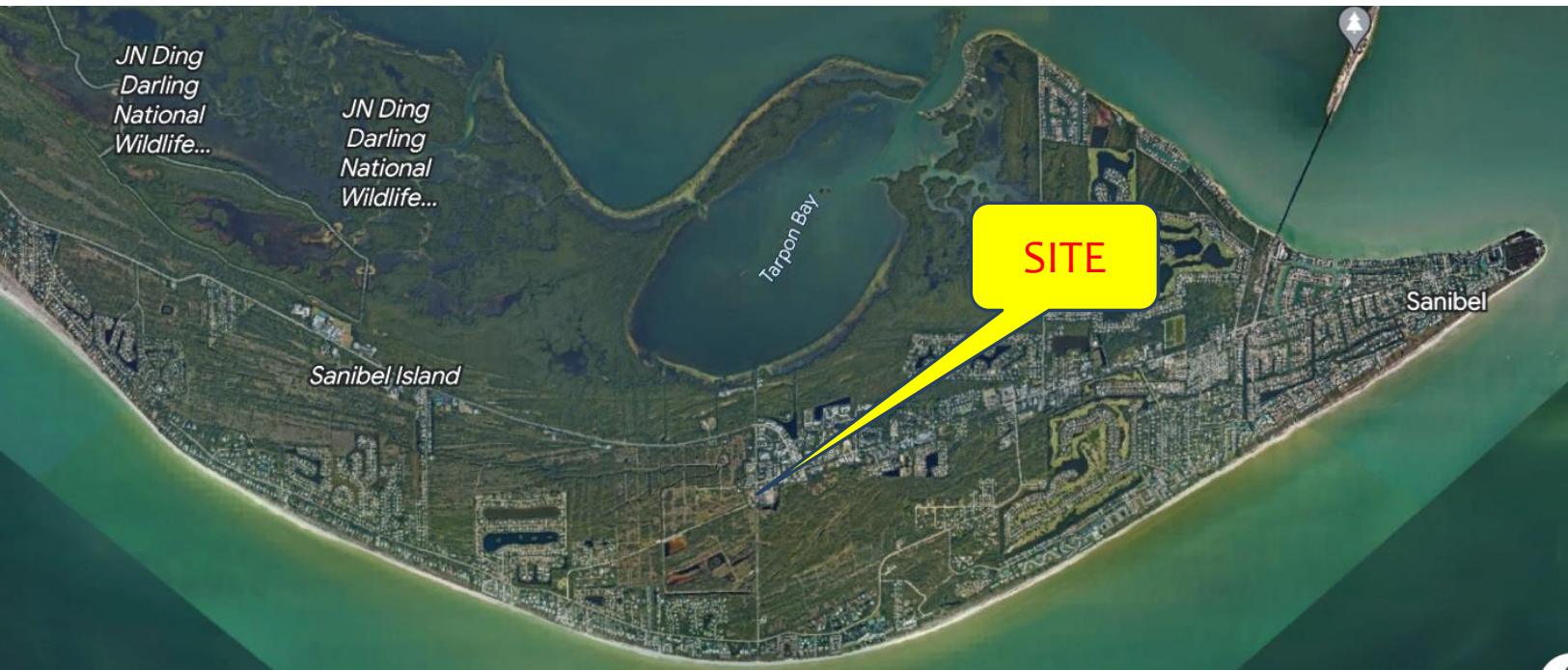


Contact
Gina LeMaster Brown
352.415.4499
gina@intrepidcre.com

365 Citrus Tower Blvd., Suite 102, Clermont, FL 34711 - www.intrepidcre.com

The information contained herein has been given to us by the owner of the property or other sources we deem reliable. We have no reason to doubt its accuracy, but do not guarantee it. All information should be verified before entering into an agreement.

High Aerial View



365 Citrus Tower Blvd., Suite 102, Clermont, FL 34711 - www.intrepidcre.com

The information contained herein has been given to us by the owner of the property or other sources we deem reliable. We have no reason to doubt its accuracy, but do not guarantee it. All information should be verified before entering into an agreement.