

Retail Space For Lease Adjacent to 7-Eleven Store

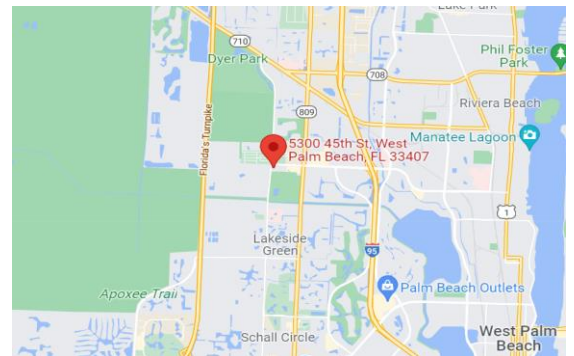
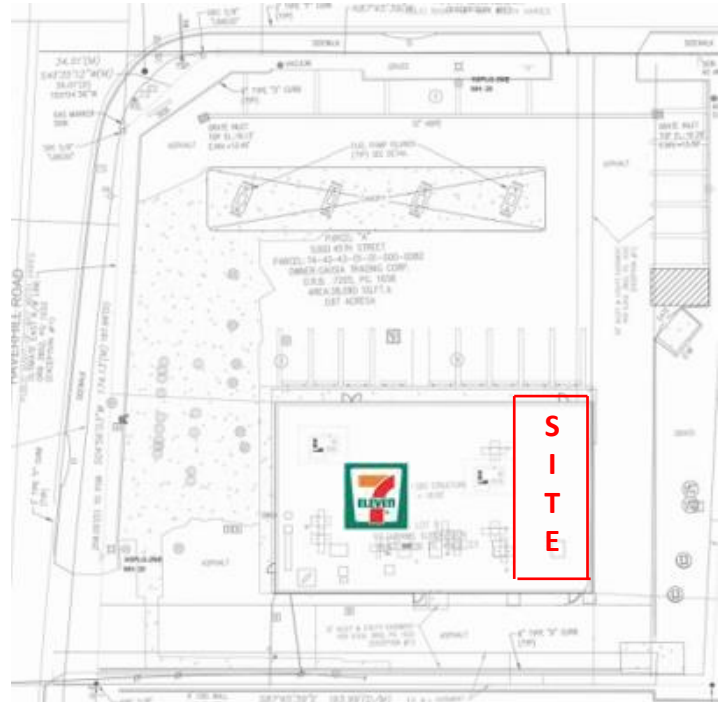
Property #41524 - 5300 45th Street West Palm Beach, Palm Beach County, Florida

Property Highlights

- Overall building size 6,000 sq. ft.
- Space available 1,515 sq. ft. (approx. 25.25'x60')
- Land size – .88 acres (38,332 sq. ft.)
- Located at the signalized intersection of 45th Street and Haverhill Road, just west of I-95
- Good mix of residential and retail
- Zoned – NC – Neighborhood Commercial (74)
- Great access & visibility
- AADT Traffic Counts - 45th Street – 29,000
Haverhill Rd – 32,000

The subject property is located just north of The Ballpark of The Palm Beaches, spring training home to the Houston Astros and the Washington Nationals. The Ballpark holds year-round events and tournaments.

Prohibited uses include items typically found at a convenience store, including the sale of motor fuels (other restrictions may apply)

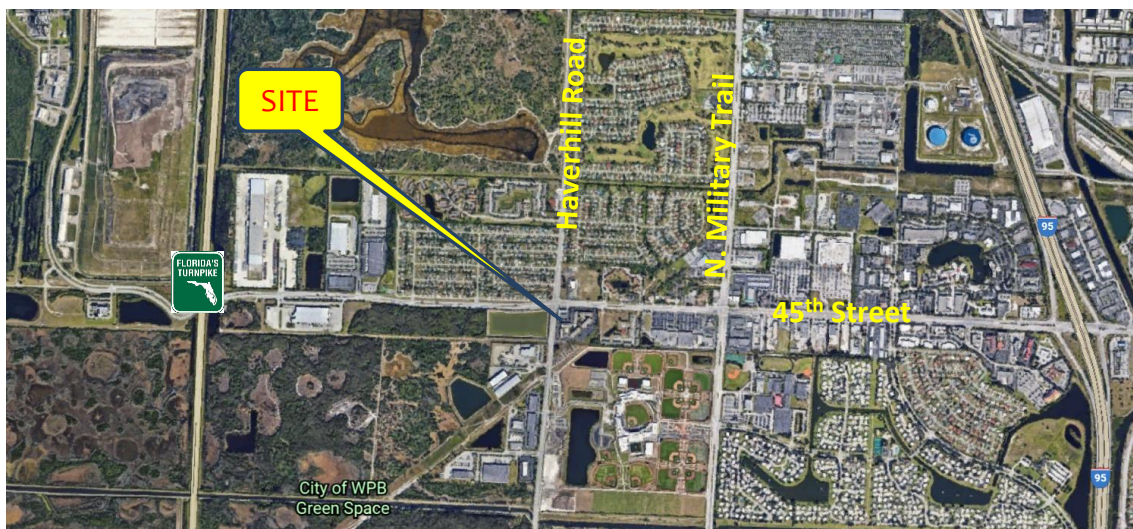


Contact:
Gina LeMaster Brown
352.415.4499
gina@intrepidcre.com

365 Citrus Tower Blvd., Suite 102, Clermont, FL 34711 - www.intrepidcre.com

The information contained herein has been given to us by the owner of the property or other sources we deem reliable. We have no reason to doubt its accuracy, but do not guarantee it. All information should be verified before entering into an agreement.

Overhead & High Aerial View



Contact
Gina LeMaster Brown
352.415.4499
gina@intrepidcre.com

365 Citrus Tower Blvd., Suite 102, Clermont, FL 34711 - www.intrepidcre.com

The information contained herein has been given to us by the owner of the property or other sources we deem reliable. We have no reason to doubt its accuracy, but do not guarantee it. All information should be verified before entering into an agreement.