

Retail/Office Space Available Deltona, Volusia County, Florida

**FOR LEASE \$880.00 per month
(plus CAM and sales tax)**

**Property #10110 – 1646 Providence Blvd., #103C
Deltona, Volusia County, Florida**

Property Highlights

- Approximately 660 square feet of retail/office space available
- Former salon
- Immediate occupancy
- Adjacent to operating 7-Eleven c- store, nutrition shop & florist
- Good access and visibility
- Good building signage
- Limited Parking
- Located at the intersection of Providence Blvd. & Tivoli Drive in the heart of heavy residential

**USE RESTRICTIONS
MAY APPLY**



Contact:

Kimberly Shiver

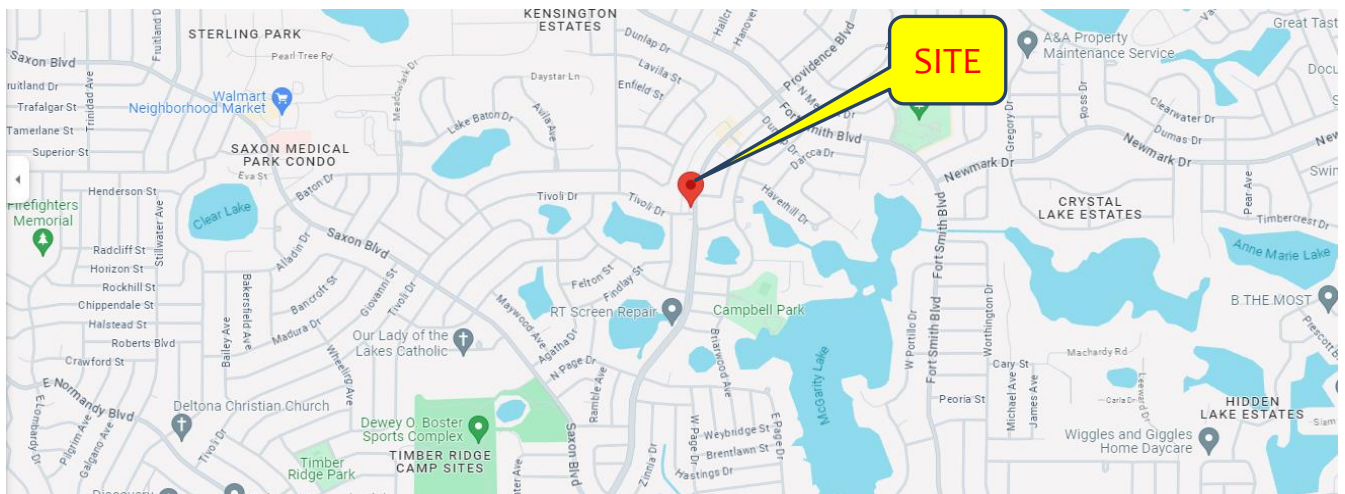
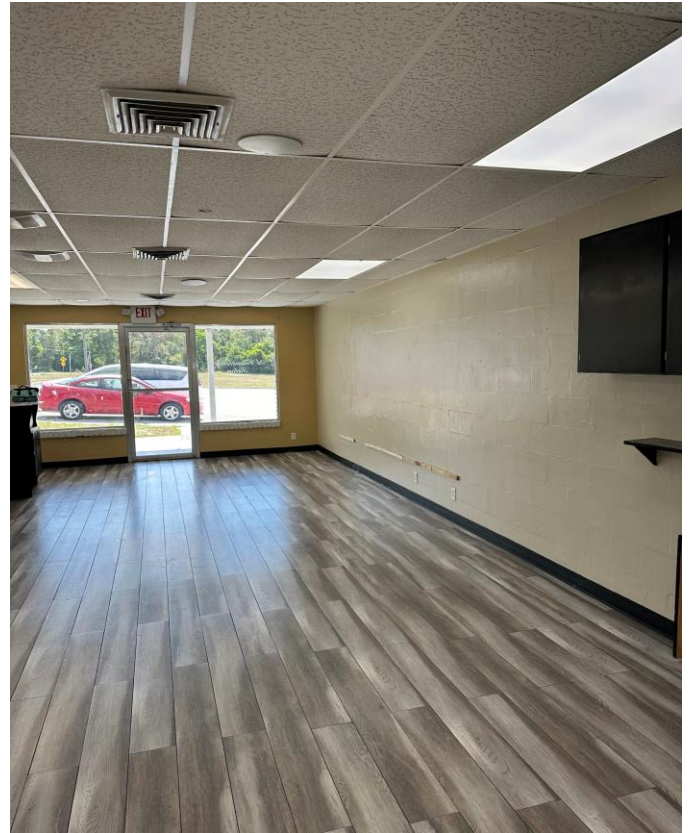
352.415.4499

Kim@intrepidcre.com

365 Citrus Tower Blvd., Suite 102, Clermont, FL 34711 - www.intrepidcre.com

The information contained herein has been given to us by the owner of the property or other sources we deem reliable. We have no reason to doubt its accuracy, but do not guarantee it. All information should be verified before entering into an agreement.

Interior Photos & Area Map



Contact
Kimberly Shiver
352.415.4499
Kim@intrepidcre.com

365 Citrus Tower Blvd., Suite 102, Clermont, FL 34711 - www.intrepidcre.com

The information contained herein has been given to us by the owner of the property or other sources we deem reliable. We have no reason to doubt its accuracy, but do not guarantee it. All information should be verified before entering into an agreement.