

Retail Space Available St. Petersburg, Florida

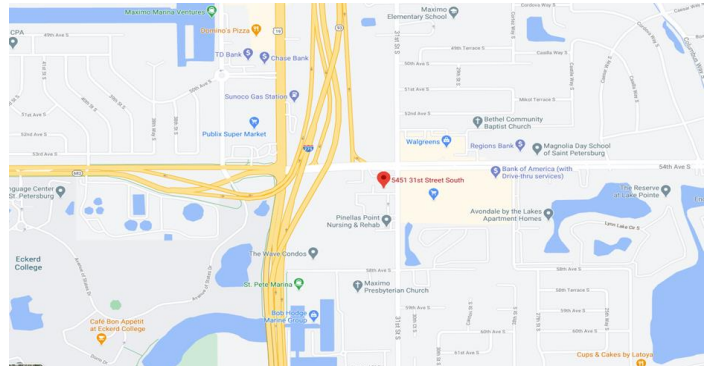
FOR LEASE \$13.50 psf MG
(plus sales tax)

5451 31st Street South
St. Petersburg, Pinellas County, Florida

Property Highlights

- 2,963 sq. ft. of retail space available
- End-cap to strip center, which includes a laundromat, dog groomer & former hair salon
- Good access & visibility
- Parking may be limited
- Area retailers include 7-Eleven, Wells Fargo, Marathon, Publix & Bealls
- Lots of residential in the area
- Located just east of I-275

**RESTRICTED FROM BEING USED AS
A CONVENIENCE STORE**
(other restrictions may apply)

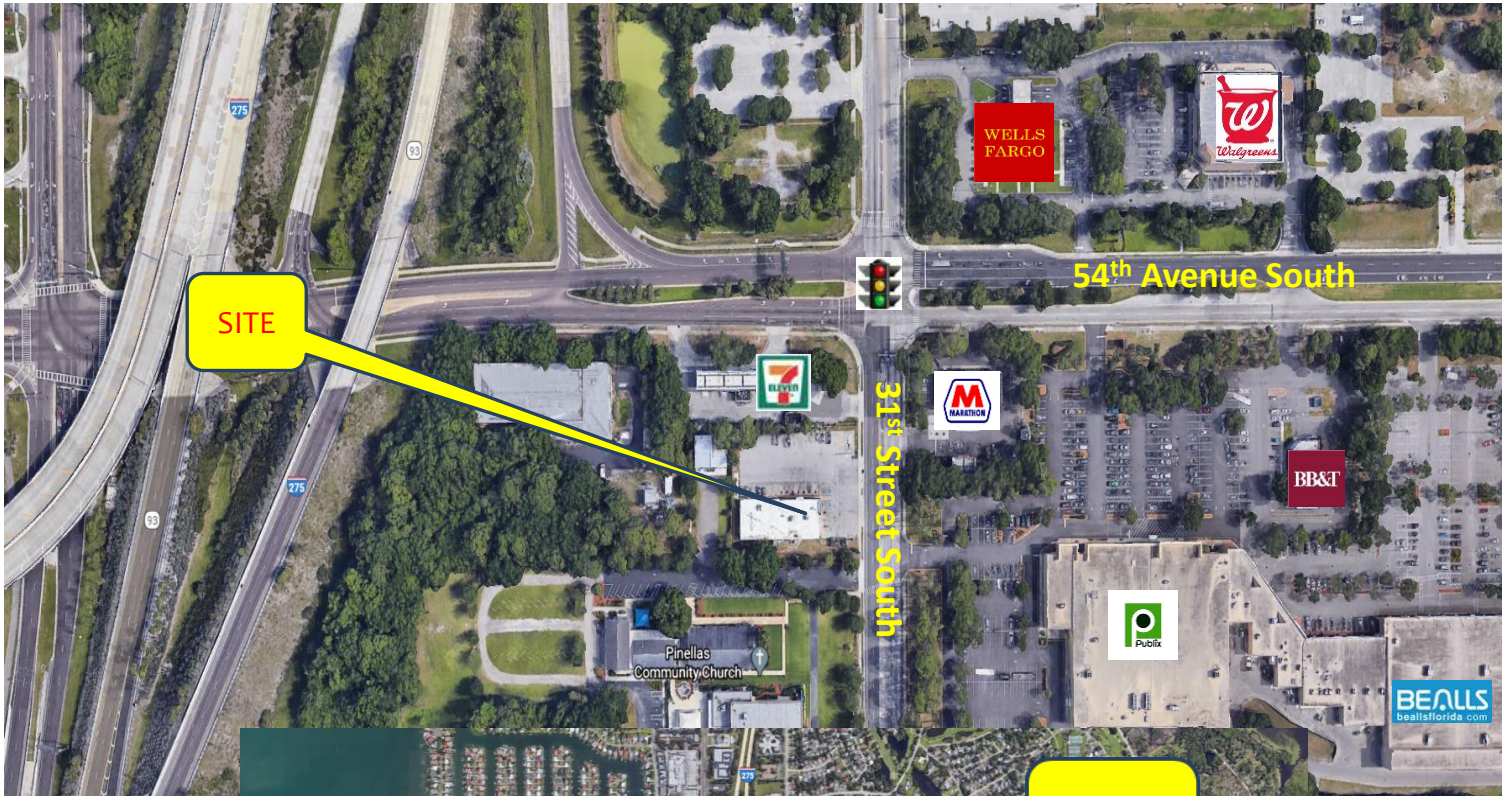


Contact:
Kimberly Shiver
352.415.4499 Ext. 2
kim@intrepidcre.com

365 Citrus Tower Blvd., Suite 102, Clermont, FL 34711 - www.intrepidcre.com

The information contained herein has been given to us by the owner of the property or other sources we deem reliable. We have no reason to doubt its accuracy, but do not guarantee it. All information should be verified before entering into an agreement.

Overhead & High Aerials



Contact
Kimberly Shiver
352.415.4499 Ext. 2
kim@intrepidcre.com

365 Citrus Tower Blvd., Suite 102, Clermont, FL 34711 - www.intrepidcre.com

The information contained herein has been given to us by the owner of the property or other sources we deem reliable. We have no reason to doubt its accuracy, but do not guarantee it. All information should be verified before entering into an agreement.