

Vacant Commercial Land on W. Dixie Highway

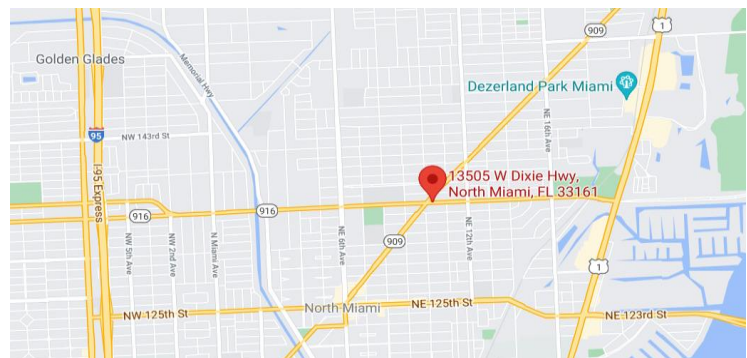
FOR SALE \$900,000

**13505 W. Dixie Highway
N. Miami, Miami-Dade County, Florida**

Property Highlights

- Land Size – .51 acres (22,161 sq. ft.)
- Zoning Classification – C-2
- Inside Urban Development Boundary
- Located at the signalized intersection of W. Dixie Highway and NE 135th Street, just east of Interstate 95
- Good Access & Visibility
- Heavy Residential and Retail Mix
- Traffic Count – 26,000 NE 135th Street
19,200 W. Dixie Highway
- 2020 Property Taxes - \$9,498.88

Will be Deed Restricted from being used as a
Convenience Store with or without
Motor Fuels in the future
(Property is being sold "AS-IS")

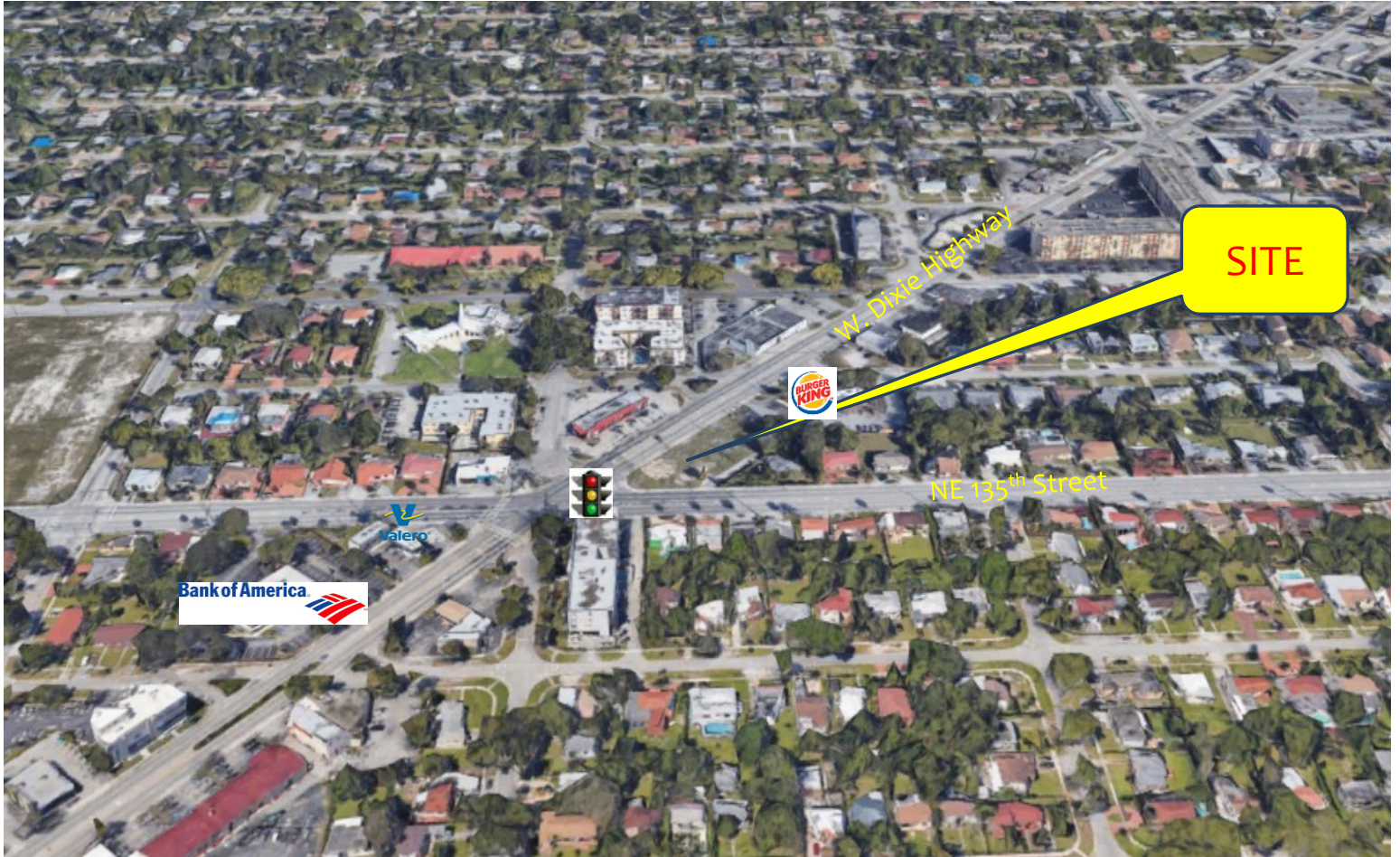


Contact:
Gina LeMaster Brown
352.415.4499
gina@intrepidcre.com

365 Citrus Tower Blvd., Suite 102, Clermont, FL 34711 - www.intrepidcre.com

The information contained herein has been given to us by the owner of the property or other sources we deem reliable. We have no reason to doubt its accuracy, but do not guarantee it. All information should be verified before entering into an agreement.

Overhead Aerial

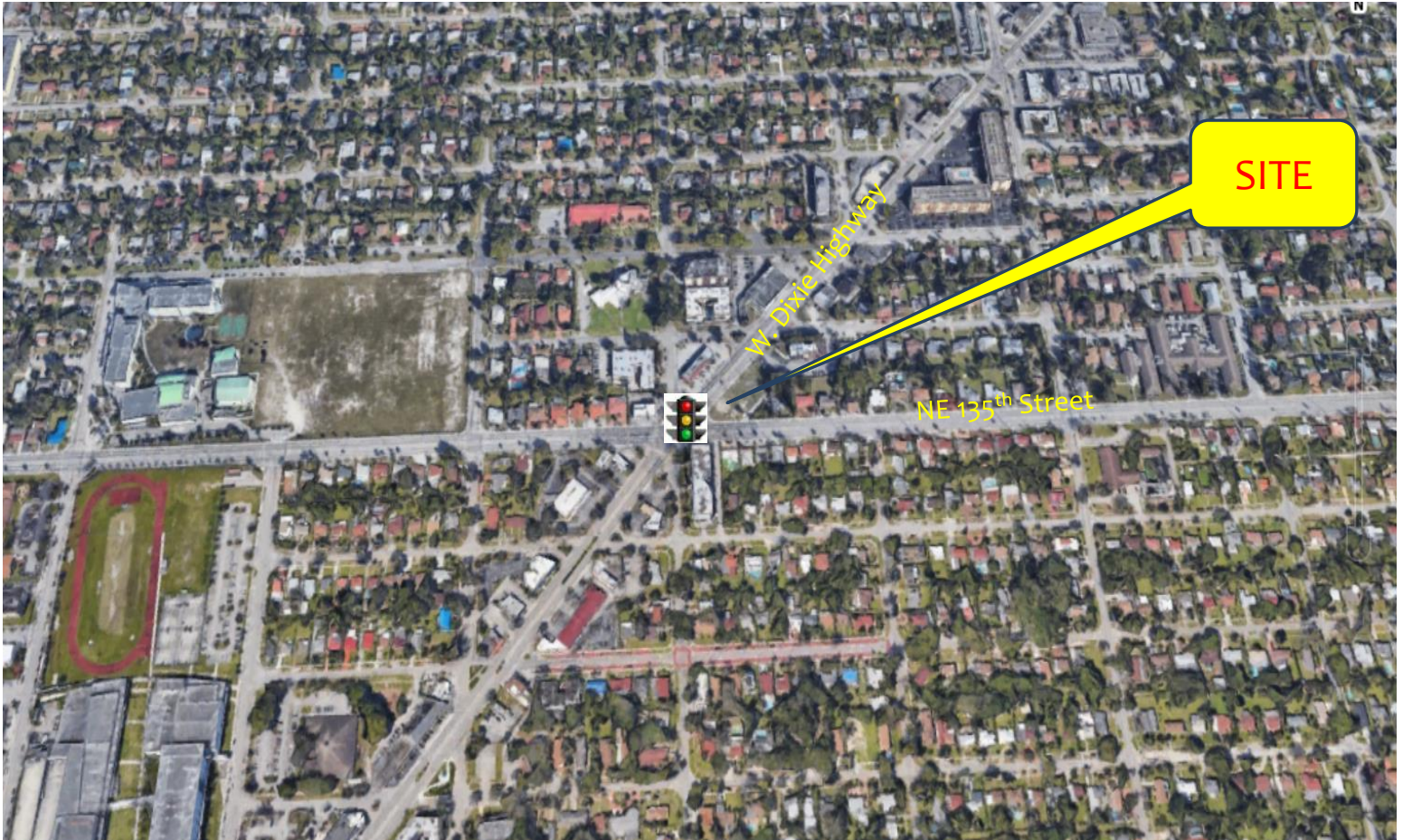


Contact
Gina LeMaster Brown
352.415.4499
gina@intrepidcre.com

365 Citrus Tower Blvd., Suite 102, Clermont, FL 34711 - www.intrepidcre.com

The information contained herein has been given to us by the owner of the property or other sources we deem reliable. We have no reason to doubt its accuracy, but do not guarantee it. All information should be verified before entering into an agreement.

High Aerial



Contact
Gina LeMaster Brown
352.415.4499
gina@intrepidcre.com

365 Citrus Tower Blvd., Suite 102, Clermont, FL 34711 - www.intrepidcre.com

The information contained herein has been given to us by the owner of the property or other sources we deem reliable. We have no reason to doubt its accuracy, but do not guarantee it. All information should be verified before entering into an agreement.